

Installation and Use Instructions

TL-2109 & TL-2109V Chair Belts

Non Restraint Chair Belts
for use with Smart Caregiver
Fall/Mobility Monitors



SMART CAREGIVER CORPORATION

TL-2109, TL-2109V Chair Belts

WARNING: Failure to comply with warning may result in injury or death. This device is not suitable for all individuals. Other devices may be required. This device is not a substitute for visual monitoring by caregiver. The manufacturer does not claim that this device will stop elopement and/or stop falls. This device is designed to augment caregivers' comprehensive resident mobility management program. **THIS DEVICE IS NOT DESIGNED TO RESTRAIN OR HOLD INDIVIDUALS IN POSITION IN THEIR CHAIRS. Test this device before each use. Read the instructions and Legal Disclaimer.**

The Smart Caregiver Corporation TL-2109 and TL-2109V Chair Belts are designed to be installed by the end user. As such, it is the entire responsibility of the buyer to insure that the system is properly installed and tested. Further, the system is not designed to replace good caregiving practices including, but not limited to:

A.) Direct patient supervision

B.) Adequate training for staff personnel for fall prevention and elopement

C.) Testing of the system before each use

WHERE PERMISSIBLE, IT IS THE SELLER'S INTENT TO LIMIT ANY LIABILITY FOR SPECIAL, CONSEQUENTIAL OR INCIDENTAL ECONOMIC DAMAGES TO REFUND OF THE PURCHASE PRICE OR REPLACEMENT OF THE GOODS. SELLER DISCLAIMS ANY LIABILITY FOR COMPENSATORY OR OTHER DAMAGES ARISING OUT OF THE USE OF THE GOODS.

WARNING: The manufacturer does not claim that this device will stop elopement and/or stop falls. This device is designed to augment caregivers' comprehensive resident mobility management program. This product is to be used by a licensed caregiver only.

Limited Warranty: Seller warrants that the goods sold will be free from defects of workmanship and manufacturing, for a period of one year from the date of sale. Other than this limited warranty, seller makes no express or implied warranties. Except for this limited warranty, NO EXPRESS OR IMPLIED WARRANTIES ARE GIVEN AND NO AFFIRMATION OF SELLER, BY WORDS OR ACTION, WILL CONSTITUTE A WARRANTY. THE GOODS BEING PURCHASED ARE BEING SOLD ON A "WITH ALL FAULTS" BASIS. THE ENTIRE RISK AS TO THE QUALITY AND PERFORMANCE OF THE GOODS IS WITH THE BUYER. SHOULD THE GOODS PROVE DEFECTIVE FOLLOWING THEIR PURCHASE, THE BUYER, AND NOT THE MANUFACTURER, DISTRIBUTOR OR RETAILER, ASSUMES THE ENTIRE COST OF ALL NECESSARY INSTALLATION, SERVICING OR REPAIRS.

Seat Belts

SEAT BELT PLACEMENT

- Unscrew one screw on either side of wheelchair that holds the seat in place.
- Attach the seat belt to wheelchair by lining up the grommet holes on the seat belt with the screw holes. Re-insert the screws through both the seat belt and wheelchair to hold the seat belt in place. Make sure the screws are tightened.
- Adjust the seat belt to the desired length using the black buckle that holds the adjustment strap in place.
- Connect the seat belt cord to the monitor.
- Place the monitor out of reach of the resident. Suitable mounting locations include the back of the wheelchair, or on the chair handle so that the resident cannot tamper with the monitor.

TEST THE SYSTEM

- Buckle and unbuckle the seat belt to set off the alert. The monitor is now active. The alert will sound whenever the seat belt is unbuckled.
- When the alert is activated, press the "Reset" button on the front of the monitor to silence the alert or use the Caregiver Key, depending on your reset setting. The status light on front of monitor will blink when the seat belt is plugged into the monitor and buckled.

NOTE: THIS DEVICE IS NOT DESIGNED TO RESTRAIN OR HOLD INDIVIDUALS IN POSITION IN THEIR CHAIRS.



TL-2109

One Finger, Easy Release Buckle
Chair Belt



TL-2109V

Hook and Loop, Quick
Release Strap

Need Set-up Help? (800) 650-3637



SMART CAREGIVER CORPORATION

1229 North McDowell Blvd., Petaluma, CA. 94954 | Tel: 800-650-3637

sales@smarcaregivercorp.com | www.smartcaregivercorp.com

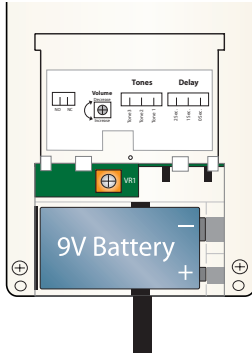
1 Install a 9 Volt Battery

Note: The black ribbon goes underneath battery for easy removal.

The battery compartment door is secured with the included Phillips-head screw

Optional Setting Adjustments

Note: Refer to your Smart Monitor instructions for setting options for your Smart monitor

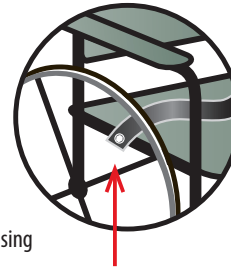


2 Seat Belt Installation

Unscrew one screw on either side of the wheelchair that holds the seat in place.

Attach the seat belt to the chair by lining up the grommet holes with the screw holes. Re-insert the screws through both the seat belt and the chair to hold seat belt in place. Make sure that the screws are tightened securely.

Adjust the Seat Belt to the desired length by using the black buckle that holds the adjustment strap in place.

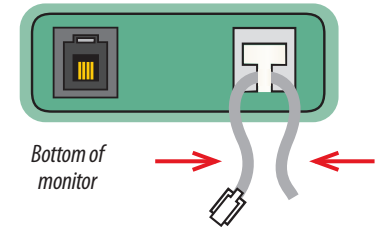


3 Mount the Fall Monitor

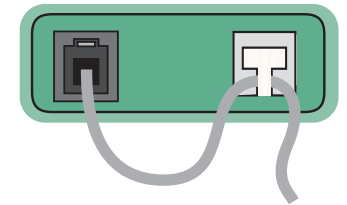
Place the monitor out of reach of the resident. Suitable mounting locations include the back of wheelchair or chair handle, so that the resident cannot tamper with monitor or reach the "Reset" button.

4 Connect the Seat Belt to the Fall Monitor

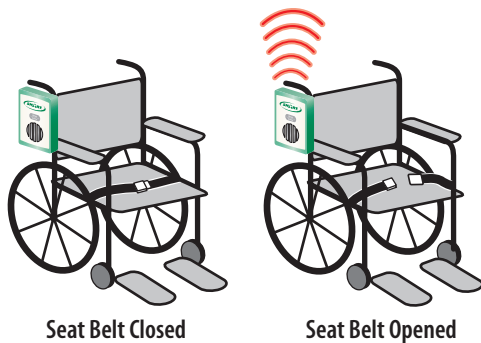
A. Pinch the cord together and route it through the strain relief recess.



B. Plug the cord into the monitor.



5 Test the System



Unfasten and fasten seat belt to set off the monitor. The monitor is now active. The monitor will sound an alert whenever the Seat Belt is unfastened.

When the monitor is activated press the "Reset" button. This will reset the monitor and silence the alert.

Resetting the Monitor/ Tamper Proof™ Mode with Caregiver Key™ (Optional)

Caregivers can choose to reset Smart Fall Monitors in either of two ways:

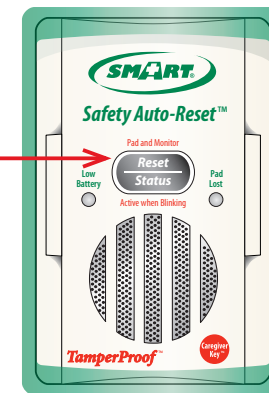
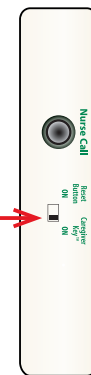
1. Pressing the Reset/Status button on the front of the monitor ("Reset Button ON" mode).
2. Placing the optional Caregiver Key™ over the red dot on the front of the monitor ("Caregiver Key™ ON" mode).

This mode allows only the caregiver to reset the monitor.

Select either "Reset Button ON" or "Caregiver Key™ ON" with the switch on the side of the Fall Monitor.

For more information about the Caregiver Key™ and how it can be used in your facility's Fall Assessment Program call 800-650-3637

*** Tamper Proof mode not available on TL-2100E**



"Reset Button ON" Mode
Press the Reset/Status button to reset the monitor.



"Caregiver Key™ ON" Mode
Place the Caregiver Key™ over the red dot to reset the monitor.